



ABOUT THE FARM

[Mykawa Farm](#) is Houston Independent School District's 6.5-acre field trip site.

Students who visit the farm:

- encounter the natural world.
- actively participate in food production, preparation, and tasting.
- practice waste management and resource conservation.
- discover new educational and vocational pathways.

The farm is managed by the Food and Agriculture Literacy Program in the district's Nutrition Services Department. The staff includes chefs, dietitians, and agriculture educators.



HOW YOU CAN HELP

You are receiving this request for support because you are an innovator in your industry. We invite you to partner with us to give students who visit the farm hands-on experiences using technology specific to your work, so they can see the value in pursuing a career in your field.

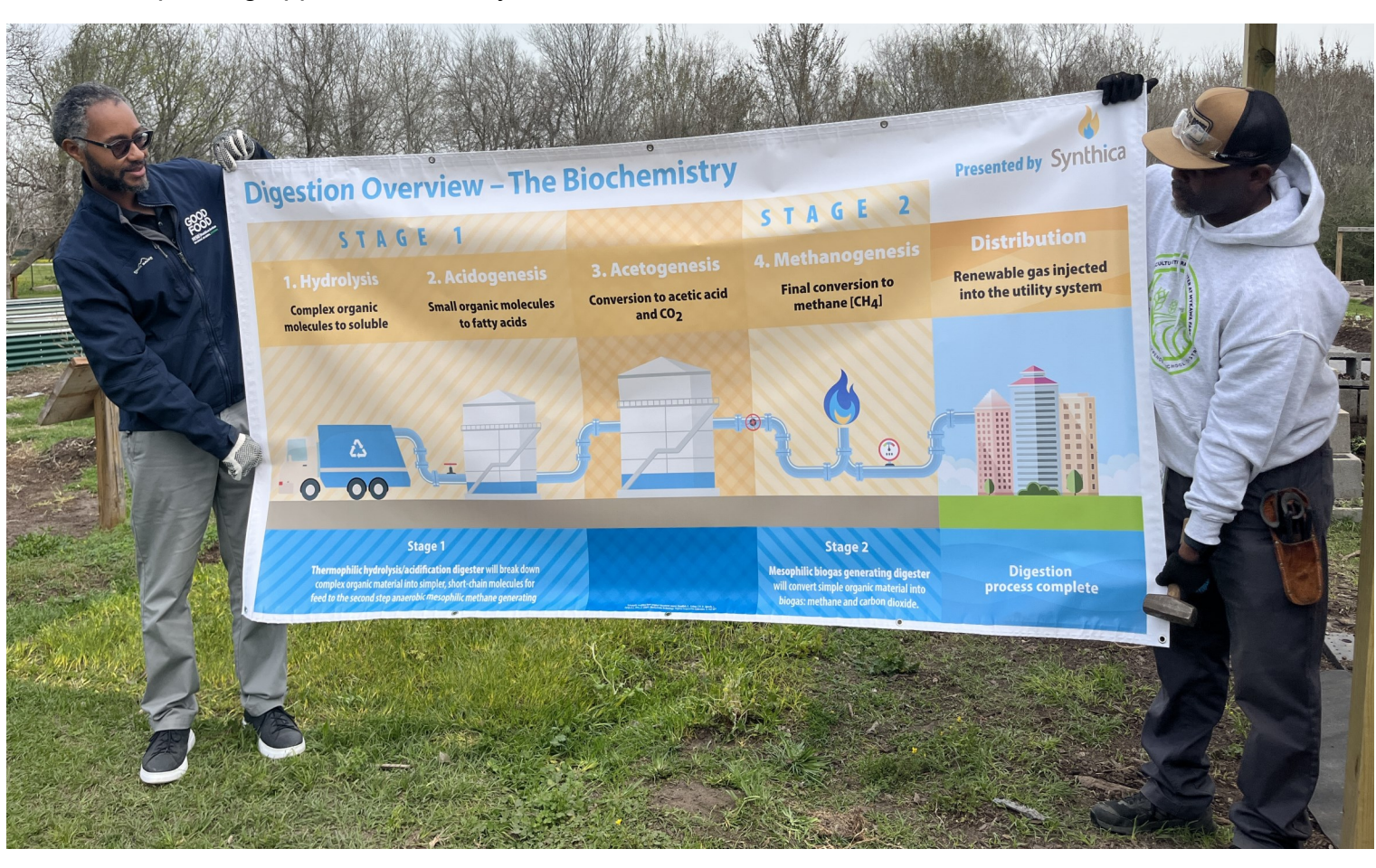
Your support of our program can take several forms:

- **Share** expertise, advising our team during the exhibit design process.
- **Donate** materials and equipment for exhibit construction on the farm our agriculture education bus.
- **Contribute** video content to our library of career testimonials that will accompany exhibits.
- **Give** financially.
- **Connect** us with other potential partners.



BENEFICIAL OUTCOMES FOR PARTNERS

- Press advisory sent to 100+ local, regional, and national media outlets
- High-resolution photos of your exhibit in action
- Your logo on signage at Mykawa Farm and on the farm webpage (clickable and directed to your url)
- Your exhibit featured in a post on the official Houston ISD blog
- Collaborator tag in at least one static social media post on Houston ISD's accounts
- Volunteer event for your employees at Mykawa Farm
- Documentation acknowledging your tax-deductible donations.
- Guest speaking opportunities at Mykawa Farm and in schools.



CURRENT PARTNERS



[Synthica](#) sites and builds anaerobic digestion facilities in the U.S. to produce biogas for commercial power plants and pipeline injection. Synthica's Houston that will divert tons of organic waste from landfills and supplement renewable natural gas supply with biogas. The Synthica exhibit at Mykawa Farm is a small-scale anaerobic digester. Students will get to load the digester with food waste and use biogas to cook a meal. A diagram shows students how Synthica's large-scale digesters use the same biotechnology to address waste management and energy production.



[Vego Garden](#) is a Houston-based producer of sustainable raised garden beds. During a corporate volunteer day, Vego Garden employees assembled the two longest raised beds the company has ever produced to house the sensory garden plants in Mykawa Farm's Meditation Maze.



[Dairy Max](#) is a nonprofit Dairy Council, representing more than 900 dairy farm families. At Mykawa Farm, Dairy Max will replicate elements from their nationally famous *Dairy Discovery Zone Exhibit* which features milkable animatronic cow and a virtual reality dairy farm tour.



[Arbor Pro USA](#) is an Urban Forest Consulting Firm and Tree Management Software Provider. At the Arbor Pro-sponsored exhibit, students will use tablets and a kid-friendly version of Arbor Pro's cutting-edge tree management software to map and evaluate the health of our trees.



NEXT STEPS

Are you excited to collaborate? Do you have questions?

Attend our farm open house on October 23, 2024 from 12-2pm

Contact Matt Graham:
(832) 291-8730
matthew.graham@houstonisd.org

Do you have other contacts who might want to support Mykawa Farm?

We appreciate you forwarding this document to them!

Do you want to give financially?

Click [this link](#).

From the "select a campaign" drop-down menu, choose "HISD Food and Agriculture Literacy Program".